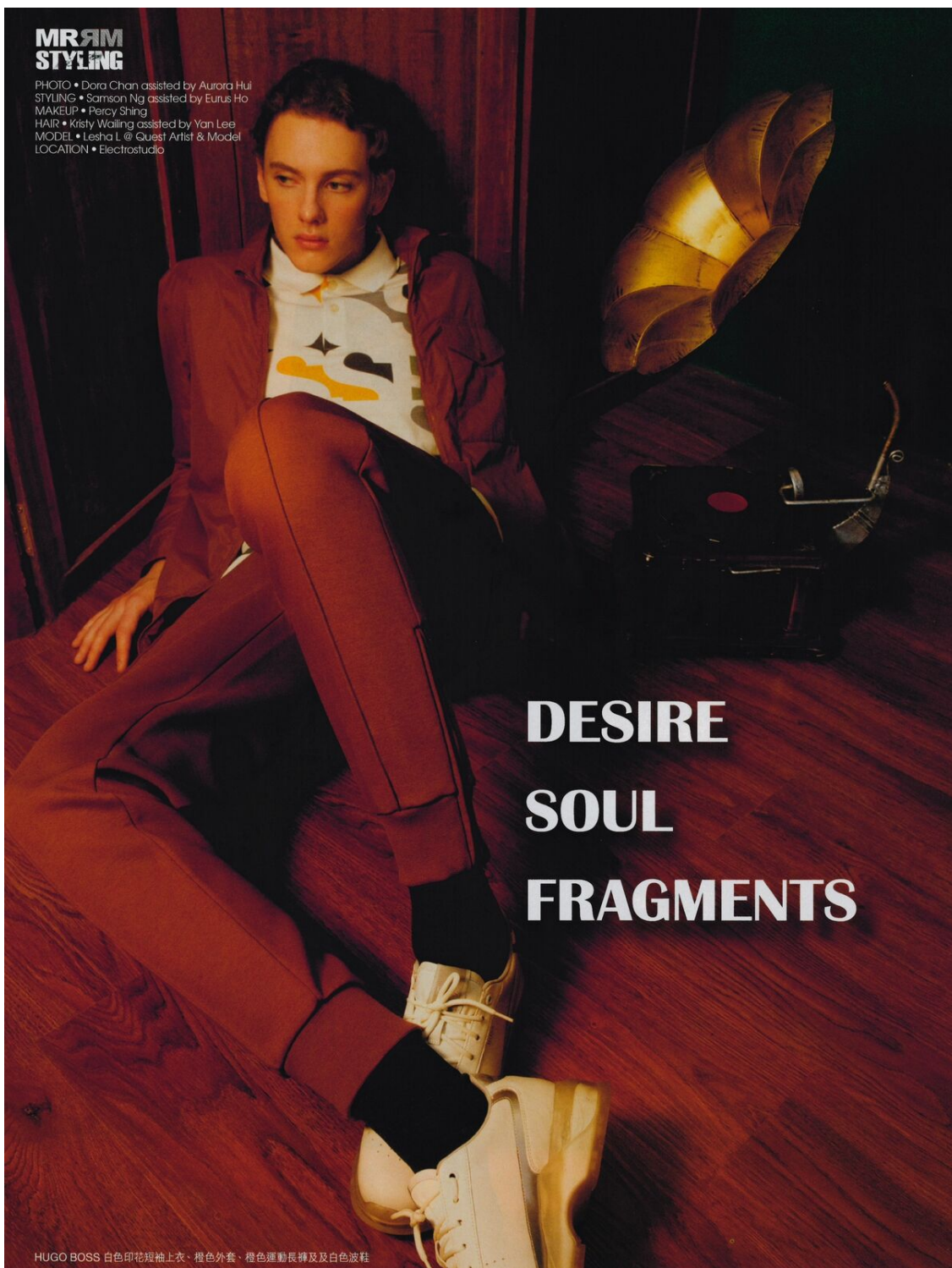


# Lesha Lisnevskiy

[inomgmt.com/profile/lesha-lisnevskiy/](http://inomgmt.com/profile/lesha-lisnevskiy/)



**MRAM  
STYLING**

PHOTO • Dora Chan assisted by Aurora Hui  
STYLING • Samson Ng assisted by Eurus Ho  
MAKEUP • Percy Shing  
HAIR • Kristy Walling assisted by Yan Lee  
MODEL • Lesha L @ Quest Artist & Model  
LOCATION • Electrostudio

**DESIRE  
SOUL  
FRAGMENTS**

HUGO BOSS 白色印花短袖上衣、橙色外套、橙色運動長褲及白色波鞋

HEIGHT	188	CHEST	87	WAIST	70.5	HIPS	90	SHOES	EU 43
	6' 2"		34½"		28"		35½"		US 9

**INO  
MODELS**